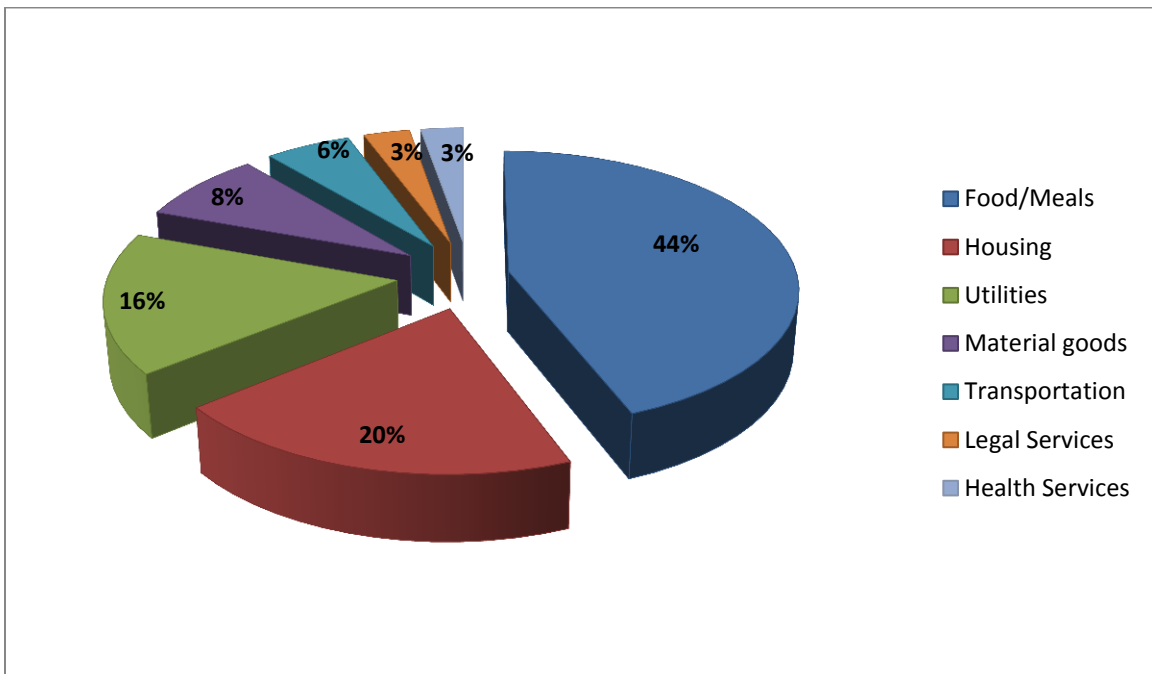




# Midland County

As of December 31st, 2016



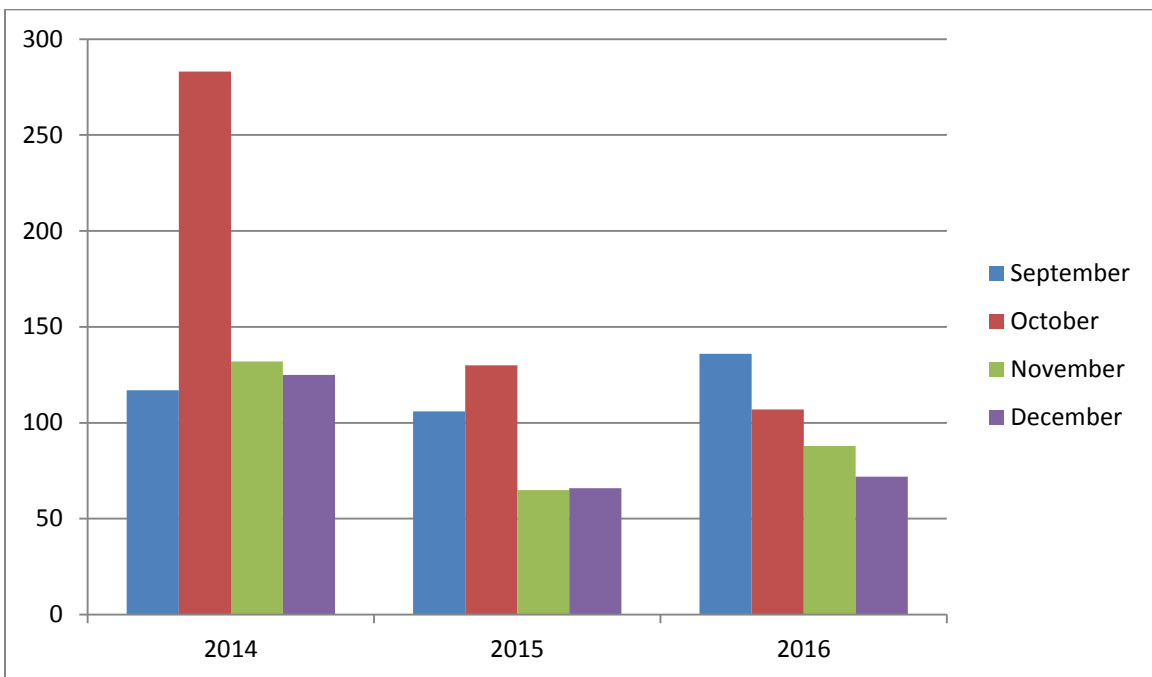
Statistics are compiled on a month end basis.

Total Contacts for December 2016: 561

Total Referrals for December 2016: 467



## Utilities



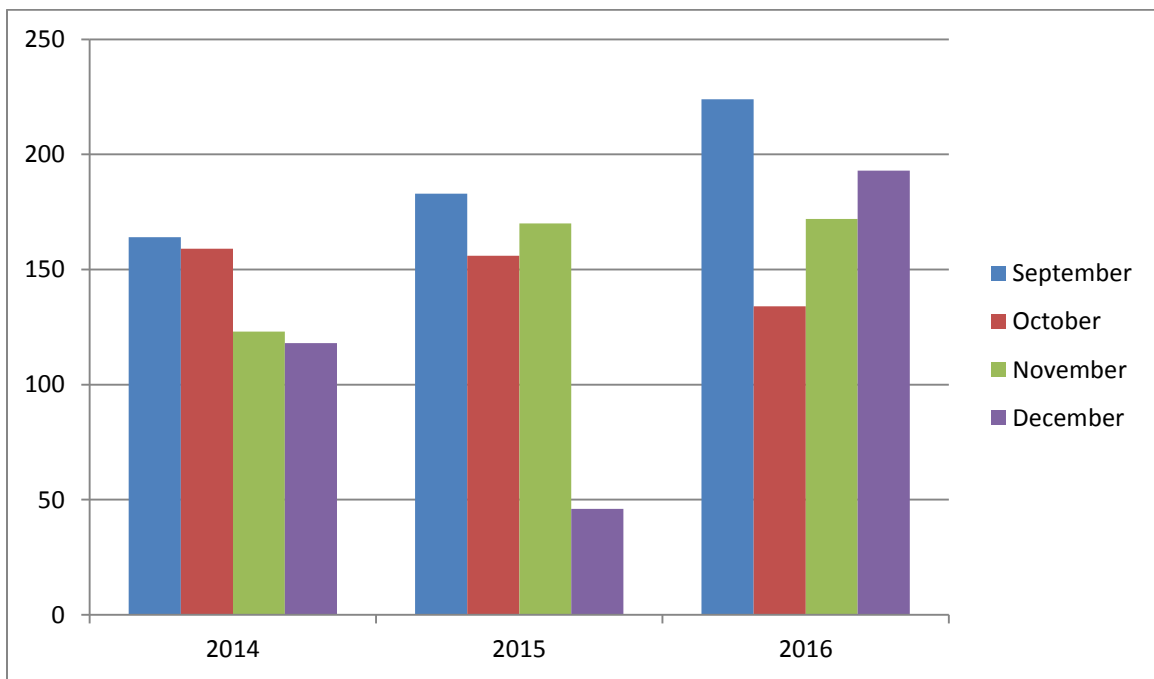
Includes electric, heating, and water assistance.

## Utilities YTD Comparison

	September	October	November	December	YTD Total
<b>2014</b>	117	283	132	125	657
<b>2015</b>	106	130	65	66	367
<b>2016</b>	136	107	88	72	403



## Food



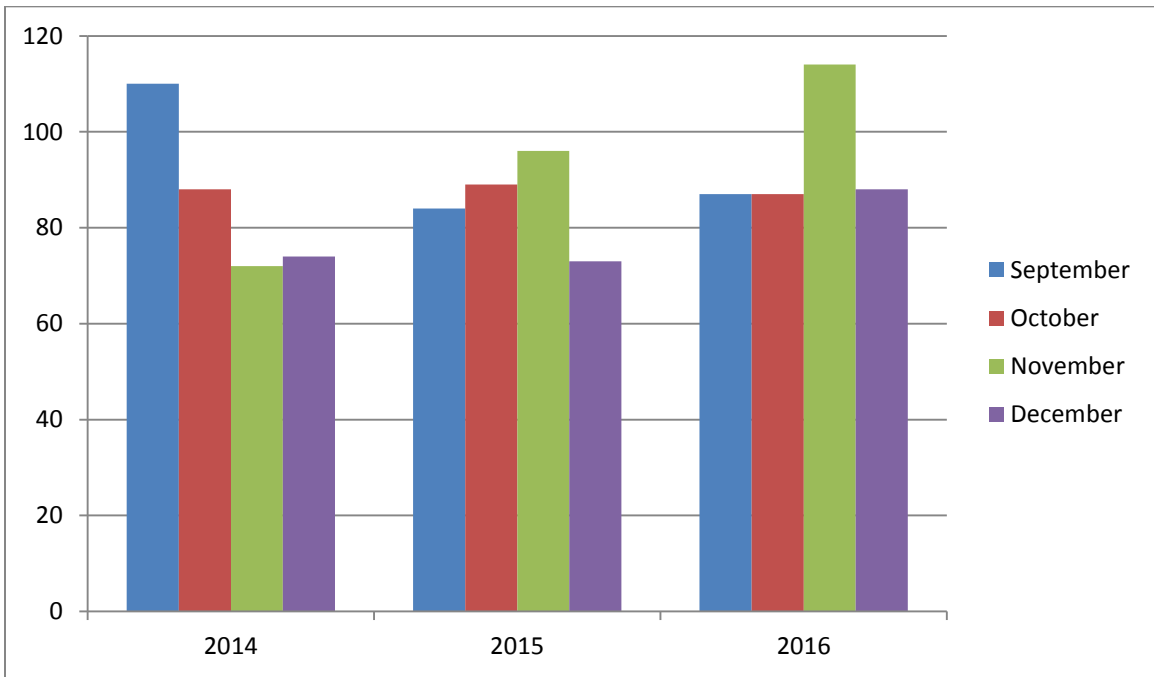
Includes food pantries, baby food, commodities, home delivered meals and food baskets.

## Food YTD Comparison

	September	October	November	December	YTD Total
<b>2014</b>	164	159	123	118	564
<b>2015</b>	183	156	170	46	555
<b>2016</b>	224	134	172	193	723



## Housing and Shelter



Includes rental, deposit assistance, housing search information and shelter information.

### Housing/Shelter YTD Comparison

	September	October	November	December	YTD Total
<b>2014</b>	110	88	72	74	344
<b>2015</b>	84	89	96	73	342
<b>2016</b>	87	87	114	88	376

For more reports contact Marketing Coordinator, Shirley Southworth at [southworth@211nemichigan.org](mailto:southworth@211nemichigan.org).