

HEALTH & HUMAN SERVICES COUNCIL OF MIDLAND

Report

3/12 Card

EXECUTIVE SUMMARY (UNRANKED)

Top 10 Social Issues

ACCESS TO CARE: Health care coverage is down 6% since 2006 and 9% since 2002. Only 7 in 10 in the 18-29 age range have insurance, compared to 8 in 10 overall. Just 58.2% are receiving medical checkups, down from 70.2% in 2006 and 2002. Dental visits have also decreased over 5% since 2006. *(Age, education and income are all factors.)*

BASIC NEEDS: The average jobless rate in 2011 was nearly 8% and over 1 in 5 residents were not able to pay all of their bills on time. More than 65% of calls to 2-1-1 were for basic needs.

DEPRESSION/SUICIDE: 16% of teenage girls in our community were frequently depressed and 13% have attempted suicide, compared with 10% of local boys. Community Mental Health is counseling over 200 citizens for depression, the most diagnosed condition. *(Nationally: 11% of adolescents have a depressive disorder by the age of eighteen. 12% of older adults are depressed, but represent 20% of suicides.)*

HOMELESS: In 2010, 3% of local respondents said they had been homeless for part of the year, 34.1% of those have children. Members of unmarried couples were least able to pay their bills on time and were most likely to be homeless part of the year.

INFANT MORTALITY: Our infant mortality rate is 6.1%, with a low birth weight rate of 7.6%. *(Typical factors considered, we fare no better than the State.)*

OBESITY: Two out of 3 adults report being overweight, an increase of 4.7% since 2006. Of children, those under 10 are at the highest risk of being overweight or obese. Just 34% of adults and 84% of youth are at an acceptable weight.

POVERTY: Individuals and families with incomes below \$20,000 paid between 50-80% of their income for housing. The recommended target is 35%. The most recent City needs assessment found a 484 unit deficiency for extremely low-income households.

SUBSTANCE ABUSE: Students are starting to drink at a younger age, while 17% of adults report binge or excessive drinking in the last month. Earlier reductions in smoking rates in 2006, have reversed, rising 2% to 23%.

(CONTINUED ON BACK)

www.unitedwaymidland.org/hhsc.php

MISSION

The Health and Human Services Council promotes the welfare of the community through systems level planning, collaboration, and promotion of health and human services with an emphasis on demonstrated effectiveness and prevention.

COUNCIL MEMBERSHIP

1016 Recovery Network
42nd Circuit Court Family Division
Arnold Center, Inc.
City of Midland - Council
Community Mental Health for
Central Michigan
Community volunteers
County Commission
Department of Human Services
Family & Children's Services
Midland Area Chamber of
Commerce
Midland Area Community
Foundation
Midland County Health Dept.
Midland County ESA
Midland County Sheriff Dept.
Midland Police Department
Midland County public schools
MidMichigan Health
Prosecuting Attorney
Senior Services
Shelterhouse CDVSA
St. John's Episcopal Church
The Dow Chemical Company
The Legacy Center for
Community Success
United Way of Midland County
Youth Action Council - MACF

SOURCES: 2010 Midland County Behavioral Risk Factor Survey; 2010 Midland County Youth Risk Behavior Survey; 2011 Youth Developmental Asset Survey; 2009 City of Midland Housing Study; 2011 2-1-1 Northeast Michigan; Michigan Department of Community Health; Center for Disease Control and Prevention; County Health Rankings; National Institute of Mental Health; Northern MI Substance Abuse Services.



FIGURE 1

RISK TAKING BEHAVIORS VERSUS ASSETS

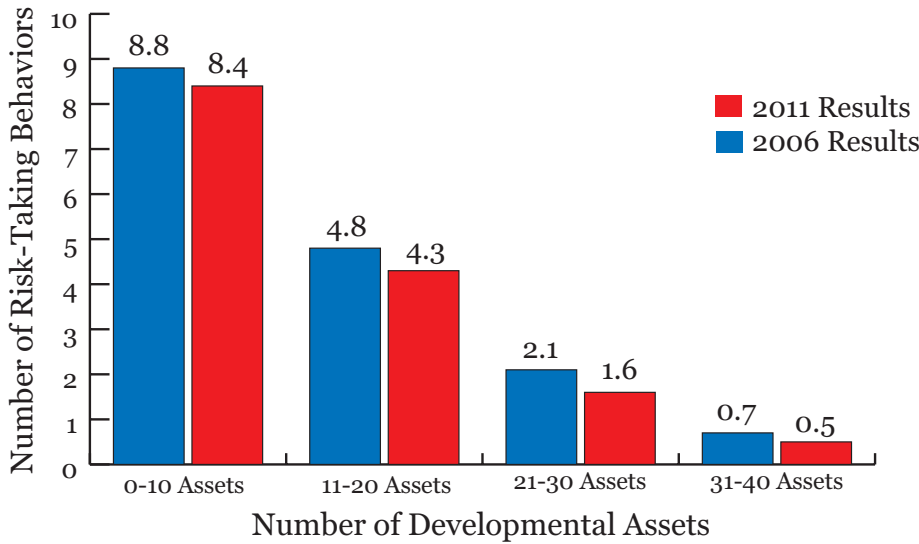


FIGURE 2

PRIMARY DRUG OF CHOICE AT ADMISSION

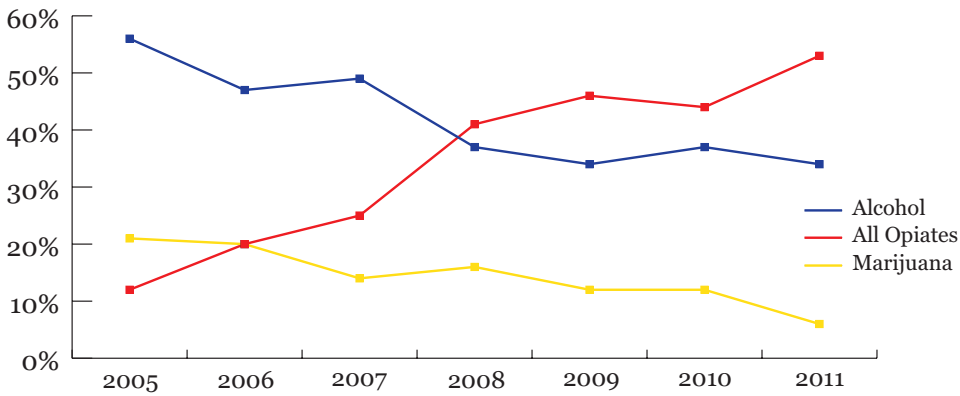
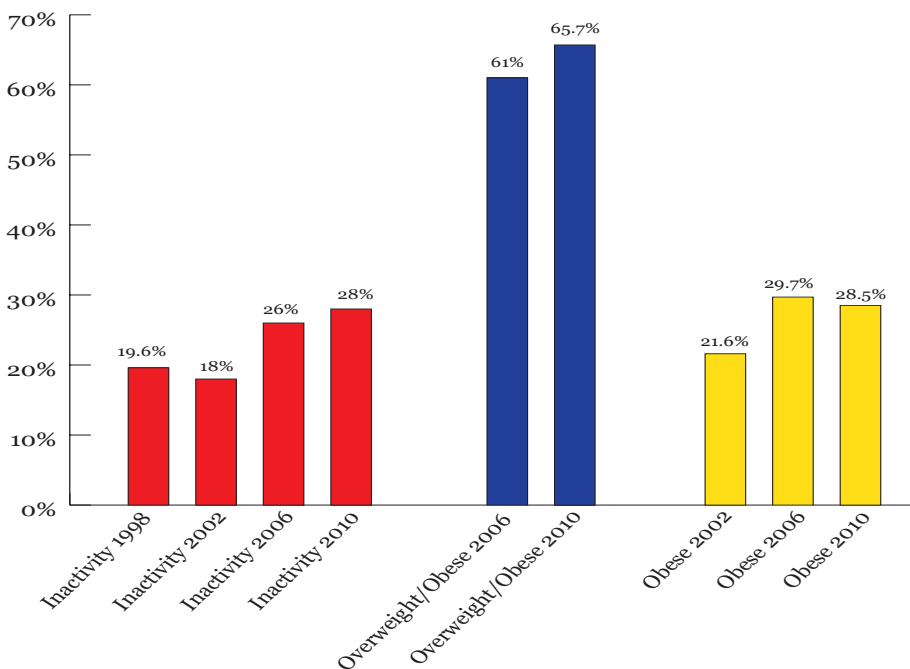


FIGURE 3

PHYSICAL ACTIVITY AND WEIGHT STATUS



FIGURES 1, 2 & 3

Figure #1: Developmental Assets increased about 15% and risk-taking behaviors decreased in Midland County adolescents between 2006 and 2011. “Positive Peers,” increased by 5%. Addressing these social determinants of risk-taking behaviors resulted in significant improvements in delinquency and health-related outcomes. Delinquency, recidivism rates, and offenses by younger siblings of court wards are also down.

Figures #2,3: Two current challenges for Midland County: Opiate Substance Abuse and Obesity. Working collaboratively, the application of asset development strategies could have an impact on our Top 10 social issues.

TOP 10 SOCIAL ISSUES
(CONTINUED)

Younger men, those with some college education, and with incomes of \$50-70,000 are more likely to use smokeless tobacco products. In 2011, more than 50% of local treatment admissions were for opiate dependency, including prescription drugs. *In 2011, opiate use outpaced alcohol problems—a rare phenomenon.*

TRANSPORTATION: Our top unmet needs from calls to 2-1-1 of Northeast Michigan relate to transportation.

VIOLENCE/PHYSICAL ABUSE: Of teenagers surveyed, 28% had experienced physical harm at home and 27% had been victims of physical violence in the past two years. Law enforcement responded to an average of two 911 calls per day where someone was in fear for their safety or the safety of others. In 2010, there were 88 reports of criminal sexual contact. *(Nationally: only 27% of domestic incidents and just 40% of rapes are reported to law enforcement.)*